

PART OF THE SE.1/4, OF THE SE.1/4, OF SEC. 27, T.6N., R.1W., S.L.B. & M.

129

NOB HILL ANNEX

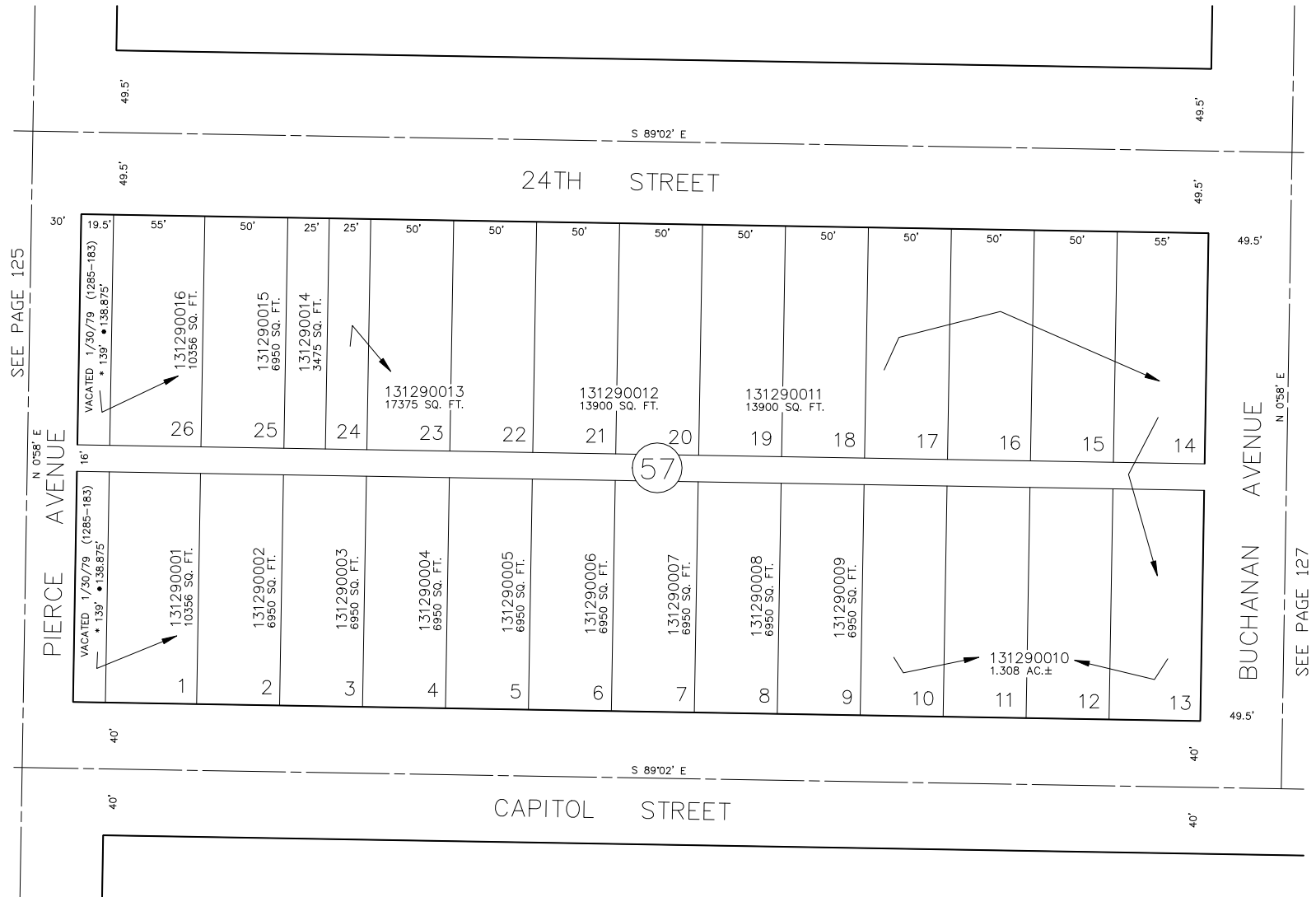
BLOCK 57

IN OGDEN CITY

SCALE 1" = 50'

TAXING UNIT: 25

SEE PAGE 106



• OGDEN CITY ENG. DEPT. PLATS
• ORIG. DED. PLAT

FOR COMPLETE ENG DATA SEE
ORIGINAL DEDICATION PLAT IN
BOOK 6, PAGE 2 OF RECORDS.

SEE PAGE 128

SEE PAGE 127